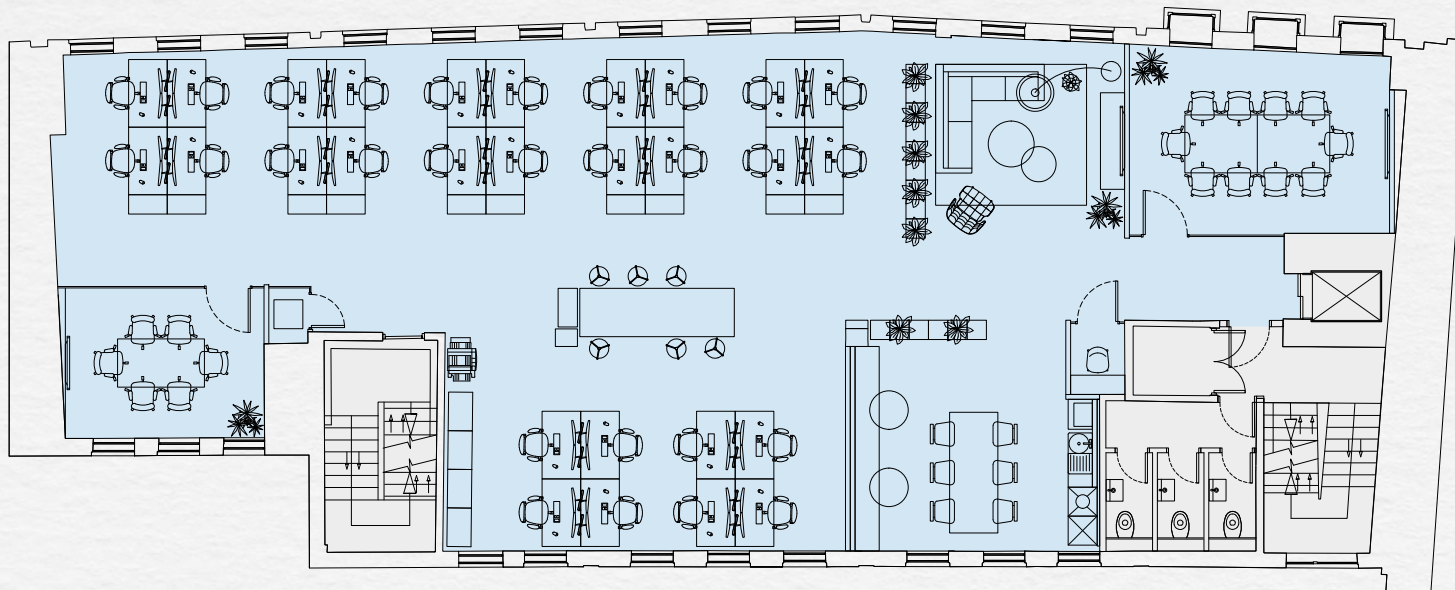


Third floor space plan

2,500 sq ft / 232 sq m / 28 desks

Open plan desks	28	Collab bench	1
Meeting room	2	Welcome area	1
Teapoint	1	Call pod	1
Breakout area	1	Print area	1
Comms cabinet	1		

Gray's Inn Road



● Office ● Core

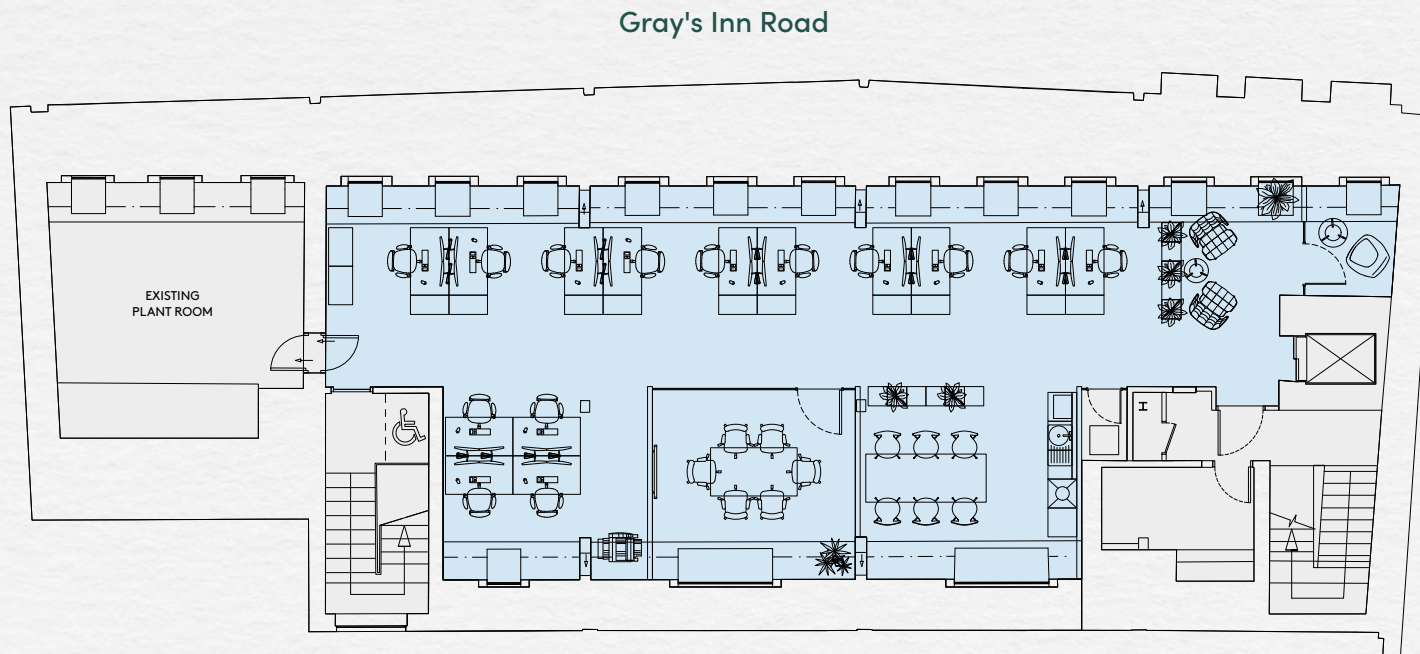


For indicative purposes only, not to scale.

Fourth floor space plan

1,443 sq ft / 134 sq m / 14 desks

Open plan desks	14	Comms cabinet	1
Meeting room	1	Welcome area	1
Teapoint	1	Call pod	1
Breakout area	1	Print area	1



● Office ● Core



For indicative purposes only, not to scale.